

The ROYAL MAIL magazine for postmark collectors

VOLUME 45 NUMBER 16

5 AUGUST 2016

GREAT FIRE OF LONDON POSTMARKS

CONTENTS

SPECIAL HANDSTAMP CENTRES - Addresses	2
FORTHCOMING SPECIAL HANDSTAMPS	2
FIRST DAY OF ISSUE POSTMARKS	7
FORTHCOMING STAMP PROGRAMME	8
SPECIAL ANNOUNCEMENTS	9
SOCIETY CONTACTS	10
PERMANENT PHILATELIC POSTMARKS	11

Published by Royal Mail Letters, 35-50 Rathbone Place, London W1T 1HQ •
Subscription address: Tallents House, 21 South Gyle Crescent,
Edinburgh EH12 9PB • Annual subscription: £12.25 UK/Europe
£24.95 rest of world • ISSN 0955-923X

Royal Mail is a trading name of Royal Mail Group Ltd. number 4138203. Registered in England and
Wales. Registered office: 148 Old Street, London EC1V 9HQ

SPECIAL HANDSTAMP CENTRES — ADDRESSES

London Special Handstamp Centre

Royal Mail, Mount Pleasant, Farringdon Road, LONDON, EC1A 1BB.

Northern England Special Handstamp Centre

South Shields D.O., Keppell Street, SOUTH SHIELDS, NE33 1AA.

Midland Special Handstamp Centre

Birmingham Mail Centre, St Stephens Street, BIRMINGHAM, B6 4AA.

Wales & The West Special Handstamp Centre

Royal Mail, 220-228 Penarth Road, CARDIFF, CF11 8TA.

Royal Mail, Tallents House, 21 South Gyle Crescent, EDINBURGH EH12 9PB

Phone Enquiries

If you have an enquiry about the postmark information or other contents of this Bulletin then please contact us on 0345 071 2000. If you are enquiring about covers, which you have sent for postmarking, then please contact 0345 071 2000 where our customer care team will be pleased to help and arrange for a replacement if necessary.

Sponsoring Handstamps

To sponsor a special handstamp contact Handstamp Liaison, Royal Mail, Tallents House, 21 South Gyle Crescent, Edinburgh EH12 9PB. Telephone: 0345 071 2000.

SPECIAL HANDSTAMPS - COLOURS OF INK

Sponsors of special handstamps may, for an additional fee, have the handstamps on their own covers applied in coloured inks. Unless otherwise stated in this Bulletin, covers sent in under the reposting service will have the postmarks applied in black ink. Indication of the use of any coloured inks will be given and readers interested in acquiring covers bearing these coloured postmarks should contact the sponsor for further information.

FORTHCOMING SPECIAL HANDSTAMPS

Items for reposting, individually addressed and bearing at least the 2nd class postage rate should be sent to the reposting address given. To ensure prompt handling please mark the outer cover 'Special Handstamp' and state clearly the serial number(s) of the handstamp(s) required. On the first day of issue of new stamps items not clearly marked will receive the 'First Day of Issue' cancellation. The outer cover must bear normal postage and only those items bearing the postmark on or before the date of the special handstamp will be eligible for the cancellation. Collectors who want their covers/cards returned under cover after handstamping should enclose a suitable self-addressed envelope. This need not bear additional postage stamps, the postage being already paid by the stamp affixed to the covers for postmarking. The handstamp illustrations in this bulletin are approximately full size; we regret we cannot guarantee that the actual postmark impressions will be the same size as the illustrations. The handstamps are announced in sections for each of the Special Handstamp Centres, and where relevant Royal Mail Tallents House, Forces Post Office, and other handstamping places. They are shown in date order with the name and address of the sponsor given at the end of each section.

For customers submitting covers/cards for more than one postmark, please use/provide a separate envelope for each postmark. Customers are also asked to clearly mark/identify the postmark number required. This will help us process the covers/cards more efficiently.

LONDON SPECIAL HANDSTAMP CENTRE

Reposting Address: London SHC, Royal Mail, Mount Pleasant, Farringdon Road,
LONDON EC1A 1BB



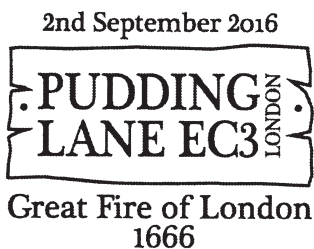
13925 - 18 August



13926 - 2 September



13927 - 2 September



13928 - 2 September



13929 - 2 September



13930 - 2 September

ST. MARTIN'S LE GRAND



LONDON EC1A 1HQ

13931
6 Sept. 2016 - 13 Dec. 2016

LONDON SPECIAL HANDSTAMP CENTRE CONTD

Sponsors:

- 13925 - The Westminster Collection Ltd, 288 Group, Unit 1, Aston Way, Poole BH12 4FE
- 13926 - Internet Stamps Ltd., Warren House, Shearway Road, Folkestone, Kent CT19 4BF
- 13927 - Internet Stamps Ltd., Warren House, Shearway Road, Folkestone, Kent CT19 4BF
- 13928 - FDCovers.com, Karno House, Hampton Court Road, East Molesey KT8 9BP
- 13929 - Benham (VF) Limited, Unit K Concept Court, Shearway Business Park, Folkestone, Kent CT19 4RG
- 13930 - Benham (VF) Limited, Unit K Concept Court, Shearway Business Park, Folkestone, Kent CT19 4RG
- 13931 - Royal Mail, 100 Victoria Embankment, London EC4Y 0HQ

MIDLAND SPECIAL HANDSTAMP CENTRE

Reposting Address: Midland SHC, Birmingham Mail Centre, St Stephens Street,
BIRMINGHAM B6 4AA



13932 - 2 September

Sponsor:

- 13932 - Midland SHC, Birmingham Mail Centre, St Stephens Street, Birmingham B6 4AA

NORTHERN ENGLAND SPECIAL HANDSTAMP CENTRE

Reposting Address: Northern England Special Handstamp Centre, South Shields D.O.
Keppell Street, SOUTH SHIELDS NE33 1AA



13933 - 16 August



LIVERPOOL,
MERSEYSIDE,
L2 3SW
03.09.16

13934 - 3 September



SHEFFIELD,
YORKSHIRE,
S1 2HH
03.09.16

13935 - 3 September

Sponsors:

13933 - Benham (VF) Limited, Unit K Concept Court, Shearway Business Park, Folkestone, Kent CT19 4RG

19334 - The Westminster Collection Ltd, 288 Group, Unit 1, Aston Way, Poole BH12 4FE

19335 - The Westminster Collection Ltd, 288 Group, Unit 1, Aston Way, Poole BH12 4FE

SCOTLAND & N IRELAND SPECIAL HANDSTAMP CENTRE

Reposting Address: Tallents House, 21 South Gyle Crescent, Edinburgh EH12 9PB



EDINBURGH,
EH1 1YT
24.08.16

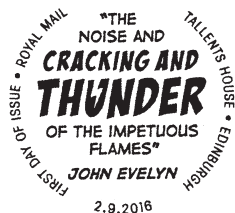
19336 - 24 August

Sponsor:

19336 - The Westminster Collection Ltd, 288 Group, Unit 1, Aston Way, Poole, BH12 4FE

FIRST DAY OF ISSUE POSTMARKS

The following first day of issue postmarks will be available for the Great Fire of London stamps to be issued on 2 September 2016.



Ref: FD 16 19 TH

Reposting Address:

Royal Mail
Tallents House
21 South Gyle Crescent
EDINBURGH
EH12 9PB

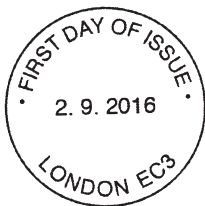


Ref: FD 16 19 PL

This postmark is available from all Special Handstamp Centres as follows:

Special Handstamp Centre, BIRMINGHAM
Special Handstamp Centre, LONDON
Special Handstamp Centre, CARDIFF
Special Handstamp Centre, EDINBURGH
Special Handstamp Centre, SOUTH SHIELDS

Covers posted into first day posting boxes at main Post Office branches will be given the London EC3 postmark shown above. A non-pictorial postmark shown below is also available for those customers preferring a plain postmark. Covers for the plain postmark should be sent to one of the Handstamp Centres.



Ref: FD 16 19 NP

This postmark is available from all Special Handstamp Centres as follows:

Special Handstamp Centre, BIRMINGHAM
Special Handstamp Centre, LONDON
Special Handstamp Centre, CARDIFF
Special Handstamp Centre, EDINBURGH
Special Handstamp Centre, SOUTH SHIELDS

All London EC3 postmarks are available from all five Special Handstamp Centres. Please send your covers to your nearest Centre. This will help Royal Mail staff manage a more even spread of work and we hope result in your covers being returned more quickly.

FORTHCOMING STAMP PROGRAMME

2016 Special Stamps

- 7 Jan 2016 – Shackleton and the Endurance Expedition
- 17 Feb 2016 – Royal Mail 500
- 15 Mar 2016 – British Humanitarians
- 5 Apr 2016 – Shakespeare
- 21 Apr 2016 – HM The Queen's 90th Birthday
- 17 May 2016 – Animapil
- 21 Jun 2016 – First World War – 1916
- 7 Jul 2016 – Music Giants
- 28 Jul 2016 – Beatrix Potter
- 16 Aug 2016 – Landscape Gardens
- 2 Sept 2016 – The Great Fire of London
- 15 Sept 2016 – Agatha Christie
- 20 Oct 2016 – To be Announced
- 8 Nov 2016 – Christmas

Post & Go Stamps

- 17 Feb 2016 – Royal Mail Heritage
- 14 Sept 2016 – Ladybirds
- 14 Nov 2016 – Hibernating Animals

SPECIAL ANNOUNCEMENT

Please note that if you wish to sponsor a Special Postmark we require the artwork to be received 6 weeks prior to the date of sponsorship. If they are not received within this time frame any late submissions may be refused.

SPECIAL ANNOUNCEMENT

Please note that postmark 13007 will continue to run until the 31st of December 2015. Postmark 13412 – House of Illustration will now be available until the 6th of May 2016. Postmark 12203 (Royal Mail London E20) has been extended until further notice.

SPECIAL ANNOUNCEMENT

To make the Postmark Bulletin more widely available, customers will now be able to view and print off the fortnightly editions as a PDF document from the 11th of December by going to www.royalmail.com/postmarkbulletin. Customers who subscribe to the publication will continue to receive their copies on a fortnightly basis and hard copies will also remain available to buy on an ad hoc basis.

SPECIAL ANNOUNCEMENT

We are delighted to announce that with immediate effect the Postmark Bulletin will be available free to all customers. Subscribers will no longer be charged for receiving their copies once their subscriptions run out. We will therefore continue to automatically post the Postmark Bulletin to subscribers and will also send the latest edition to anyone who requests a copy.

SPECIAL ANNOUNCEMENT

Please note that Postmark 13736 which we previously stated would be postponed until further notice has been cancelled.

SOCIETY CONTACTS

Association of GB First Day Cover Collectors

The Association publishes an informative Newsletter, organises meetings and auctions. For details of Association pub meetings at The Ship & Shovel, Craven Passage, London WC2 contact Richard Park, 2 Chaffinch Close, Horsham RH12 5HA, Tel 01403 241825 (before 10pm), or e-mail rjpark@btinternet.com For details of meetings at The Bowling Green Pub, Shaw Lane, Stoke Prior, Bromsgrove, Worcestershire contact Joseph Adam Bevan on 07969 311 003 or 0121 477 9924 (weekdays 7-10pm). For details of Association membership contact Terry Barnett, 7 Mackets Lane, Hunts Cross, Liverpool L25 0QA or see www.gbfdc.co.uk

British Postmark Society

The Society was founded in 1958, and its Journal is essential reading for all serious collectors of British postmarks, old and modern. For BPS membership details contact Duncan James, 26 Redhall Crescent, Edinburgh EH14 2HU, the previous holder Mr. Strachan has now retired, or see website www.britishpostmarksociety.org.uk The well-designed website includes details of 11 highly useful BPS publications still available. These cover special event postmarks (special handstamps), slogans, and skeleton and First Day of Issue postmarks.

Postal Mechanisation Study Circle

The PMSC's monthly Newsletter includes numerous reports of value to collectors of postal mechanisation material in the UK and worldwide. For full details of our activities and membership rates (now including the key subscription rate reduced by 0% for new customers choosing to receive our publications electronically by email rather than printed), please contact Jeremy Meal, 41 Delfur Road, Bramhall, STOCKPORT, SK7 2HG, email Jeremy.Meal@btinternet.com

Great Britain Philatelic Society

The Society, founded in 1955, caters for serious collectors of GB stamps, particularly the older issues. It publishes a prestigious magazine, The GB Journal, and a highly informative and readable Newsletter, both of which sometimes include features of interest to postmark collectors. For details of GBPS membership and activities contact Peter Tanner, Highstandings, 13 St Hubert's Close, Gerrards Cross SL9 7EN, or visit www.gbps.org.uk

The TPO & Seapost Society

The society was founded in 1938, catering for all who are interested in Travelling Post Office (TPO) and Maritime (seapost/paquebot/naval) material, as a main collection or as part of some other collecting field. The Society publishes an award winning quarterly Journal, full of news and interesting information of TPO and Seapost matters. Postal auctions are held four times throughout the year and the exchange of news, views, and information between members is encouraged by means of meetings held periodically in regional centres and London. For a free copy of our magazine and a membership application form please contact: Keith Morris, TPO and Seapost Society, 1 St Marys Drive, FAIRFORD, GL7 4LQ www.tpo-seapost.org.uk Email TPO_Seapost@Hotmail.com

Railway Philatelic Group

The RPG, founded in 1966, caters for collectors of railway letter and parcel stamps, railway postmarks, and postage stamps with a railway theme. For details of the RPG and its activities contact F W Taylor, 5 Garth Lane, Widdrington, Morpeth NE61 5EN, Tel 01670 760 252.

Welsh Philatelic Society

The society, founded in 1971, publishes an excellent journal with features on Welsh postmarks past and present, runs several postal auctions and holds regular meetings, including a popular weekend. The annual subscription is £9. For details, contact the secretary, - Neil Prior, 20 Heol y Sheet, North Cornelly, Bridgend CF33 4EY or see the Society website: <http://www.wps.wales.org>

East Anglian Postal History Society

Members of the Study Circle collect and study the postmarks and postal history of Cambridgeshire, Essex, Hertfordshire, Huntingdonshire, Lincolnshire, Norfolk, and Suffolk. Their findings are published in 'Eastern Angle', an informative and well-produced journal, ably edited by Barry R Reynolds. For details of the Study Circle contact the Secretary: John J W Copeland, 20 The Vale, Brentwood, Essex CM15 4UP.

PERMANENT PHILATELIC POSTMARKS

The following pictorial postmarks are provided by Royal Mail for philatelic mail and can be obtained under the reposting service by sending covers/cards bearing at least 1st class postage to the relevant Special Handstamp Centre (SHC). Please quote the reference number given. The addresses of the SHCs are given elsewhere in this Bulletin. Eight of the handstamps are illustrated here.

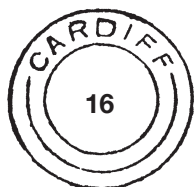
<i>Ref.</i>	<i>Location</i>	<i>SHC</i>
4640	Bath	London
4641	Belfast	Tallent House, Edinburgh
4642	Birmingham	Midlands
4643	Brighton	London
4644	Bristol	Wales & West
4645	Cambridge	London
4646	Canterbury	London
5097	Cardiff	Wales & West
4648	Chester	Wales & West
4649	Colchester	London
4650	Coventry	Midlands
4651	Croydon	London
4652	Durham	Northern England
4653	Edinburgh	Tallent House, Edinburgh
4654	Exeter	Wales & West
4655	Gatwick	London
4656	Glasgow	Tallent House, Edinburgh
4657	Gloucester	Midlands
4658	Grimsby	Northern England
4659	Guildford	London
4660	Harrogate	Northern England
4661	Leeds	Northern England
4662	Leicester	Midlands
4663	Liverpool	Northern England
4664	London EC	London
4665	London EC3	London
4666	London SW	London
11067	London SW1	London
4667	London WC	London
4668	Manchester	Northern England
4669	Newcastle Upon Tyne	Northern England
4670	Norwich	London
4671	Nottingham	Midlands
4672	Oxford	London
4673	Plymouth	Wales & West
4674	Portsmouth	London
4675	Romford	London
4676	Southampton	London
4677	Southend on Sea	London
5096	Stevenage	London
4678	Stratford upon Avon	Midlands
4679	Truro	Wales & West
4680	Windsor	London
4681	York	Northern England



PERMANENT PHILATELIC POSTMARKS



6036



6038



10056



6043



4414



7667



9569

Last day of use of Postmark number 9568 The British Postal Museum & Archive is 31st January 2016.



6039



6040



6041



6042

Special handstamps in permanent use for tourist/philatelic mailings. These are illustrated above with reposting number and addresses to which cards/covers should be sent for reposting. Cards/covers must bear at least the 1st class postage rate.

No 6036, 9568, 10056 - London SHC, Royal Mail, Mount Pleasant, LONDON EC1A 1BB

No 6043 - Midlands SHC, Birmingham Mail Centre, St Stephens Street, BIRMINGHAM B6 4AA

No 6038 - Wales & West SHC, Royal Mail, Penarth Road, CARDIFF CF11 8TA

Nos 4414, 6039-42, 7667 - Royal Mail, Tallents House, 21 South Gyle Crescent, EDINBURGH EH12 9PB

Readers are reminded that Royal Mail provides operational style datestamps for London EC (No 4178), London SW (4179), Heathrow Airport (4180), Birmingham (4181), Stratford-Upon-Avon (4182), Newcastle-Upon-Tyne (4183), York (4184), Edinburgh (4185), Glasgow (4186), Belfast (4187), Carrickfergus (4188), Windsor (4177), Slough-Windsor (4189), Cardiff (5107) and Caernarfon (4191). These were shown on page 10 of the 4 February 2011 Bulletin.

Please note that running postmarks 12120 - Concorde Filton Bristol and 12117 London SW1 will continue for an additional year.